

Version

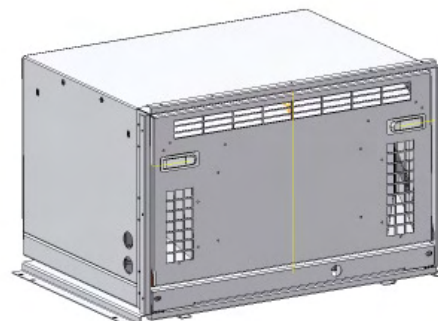
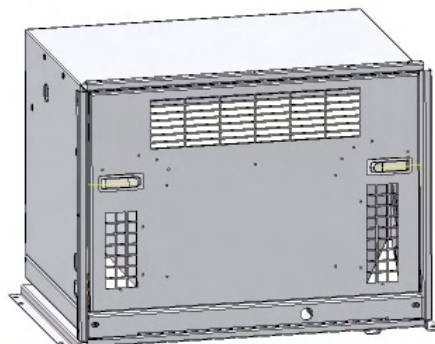
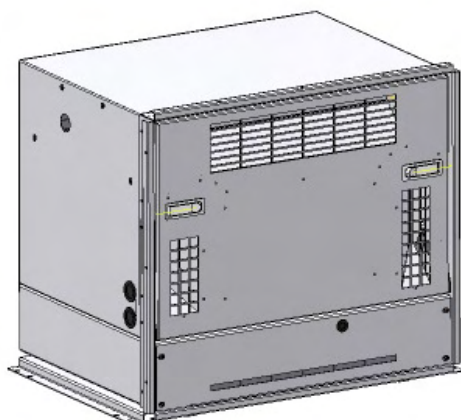
- with fuel tank
- with muffler inside canopy

Version

- without fuel tank
- with muffler inside canopy

Version

- without fuel tank
- with external muffler



Remote control panel

The generator control panel was designed to include, in only one single panel, all switches, control and protection devices. Components are the following :

- Multifunction display showing V, Hz, rpm, h, V_{batt}
- Start / stop button.
- AUTO mode push-button for starting from external contact.
- Generic alarm lamp with message on display for start failure, stop failure, low oil level, high engine temperature, overspeed, low battery voltage, low alternator voltage, low-frequency, internal memory error.
- Connection cable to remote panel.

Engine

- Easy access to feeding system and lubrication maintenance.
- Safety shutdown in case of low oil pressure and high water temperature.
- Easy access to oil and fuel filter.

Alternator

- Synchronous, 2 poles, self-excited, self-regulated, brushless.
- Rotor and stator epoxy resin coated against external agents.
- Rotor dynamically balanced.
- Insulation class H.

Soundproof cabin

A new project and a new great design. Main frame made of painted steel with a special strong coat against external agents. Excellent accessibility for easier maintenance services, even if generator is installed in narrow site.

Technical features

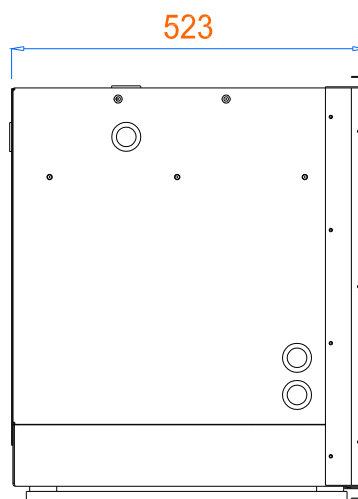
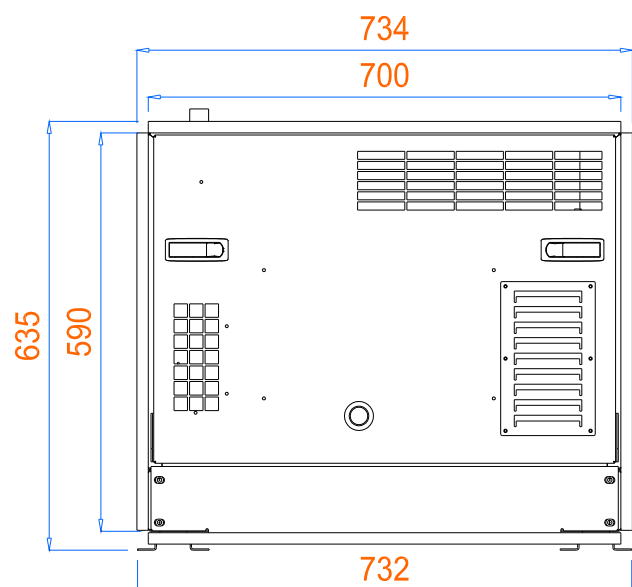
ENGINE		
Model		Honda GX390 OHV
Type		Unleaded gasoline, 4 stroke
Power	hp	11
Cylinders	n°	1
Displacement	cm ³	389
Cooling		Air
Air intake		Natural
RPM	rpm	3000
Oil sump capacity	L	1
Consumption (3/4 load)	L/h	2,3
Starter		Electric
Battery	(Ah-V)	24 - 12

ALTERNATOR		
Type		Synchronous, Self-excited, 2-poles
Max. power	kW	5
Cont. power	kW	4,5
Power Factor (cos Φ)		1
Voltage	V	230
Frequency	Hz	50
Voltage regulator		Capacitor
Insulation class		H

Noise level	dB	86 L _{WA}
-------------	----	--------------------

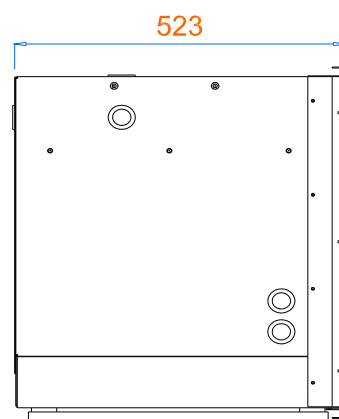
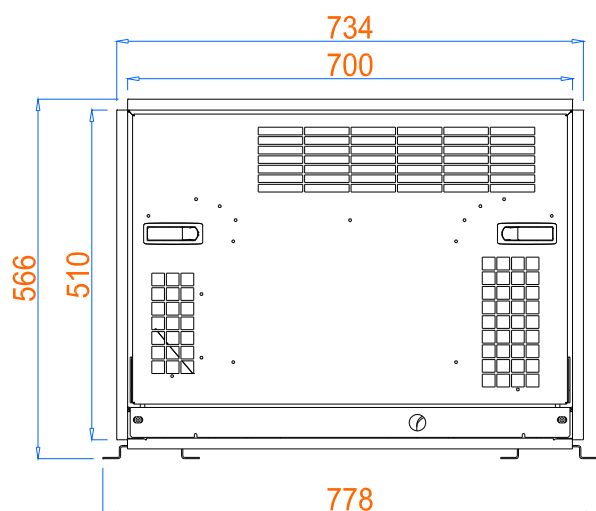
VOYAGER 6000 B

mase
GENERATORS



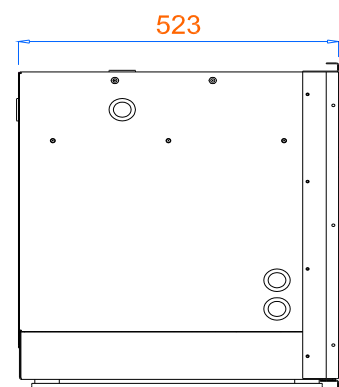
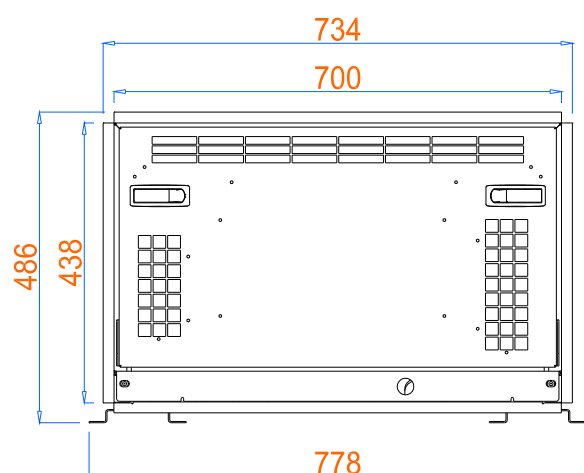
Version
- fuel tank 17 Liters
- with muffler inside canopy

Weight: 155 kg



Version
- without fuel tank
- with muffler inside canopy

Weight: 140 kg



Version
- without fuel tank
- with external muffler

Weight: 125 kg

Dealer:

*This drawing is only a reference and is not indicated for the installation.
For more information, you may contact your local dealer or **mase generators S.p.A.***

mase generators S.p.A. reserves the right to change the design or specifications without notice and without any obligations or liability whatsoever. For more information, you may contact your local **mase** dealer.



Remote control panel

The gen-set control panel was designed to include, in one single panel, the switches, control devices and the protection devices. The components are the following :

- Hour-meter.
- Start-stop button.
- Warning lamps for high temperature, low oil pressure, generator running, low fuel level.
- Cable 10 mt long.

Engine

- Easy access for feeding system and lubrication's maintenance
- Safety shutdown in case of low oil pressure.
- Safety shutdown in case of high water/exhaust gas temperature.
- Oil and fuel filters of easy access.

Alternator

- Synchronous, 2 poles, brushless, self-excited, self-regulated.
- Rotor and stator epoxy resin coated against external agents.
- Rotor dynamically balanced.
- Insulation class H.

Soundproof cabin

A new project engineering design with a structure of painted steel panels with high resistance to external agents. Easy access to the inner cabin in case of maintenance services.

MOTOR

50 Hz

Model	Yanmar L48AE
Type	Diesel 4 times
Cylinders (nr.)	1
Capacity (cc)	211
Power (hp)	4,2
RPM	3000
Injection system	Direct
Speed governor	Centrifugal, mechanical
Lubrication system	Forced
Oli sump capacity (lt)	0,8
Engine stop system	Solenoid
Fuel pump	Electric
Fuel pump discharge (cm)	70
Fuel consumption (lt/h)	0,8
Starting battery (Ah-V)	45 - 12
Starter (kW-V)	0,8 - 12

ALTERNATOR

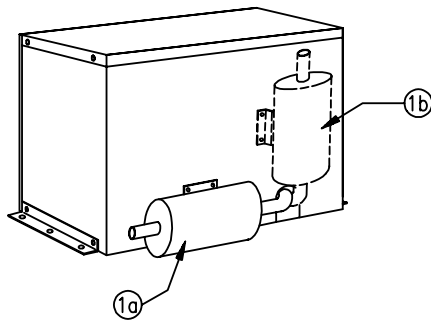
50 Hz

Type	Synchronous type, 2-poles, auto excited
Cooling	Air
Voltage (V)	230
Frequency (Hz)	50
Max. power (kW)	2000
Continuous power (kW)	1,9
Battery charger (Ah-V)	10-12
Power factor(cos ϕ)	1
Insulating class	H
Voltage stability	$\pm 10\%$
Frequency stability	$\pm 5\%$

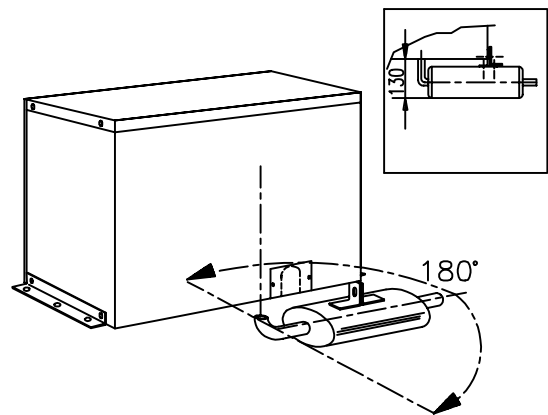
Dimensions(Len.x widthx height)	580 x 430 x 430mm
Weight	80 Kg.
Nois level	62 dB _A a 7mt

VOYAGER 2500 DM

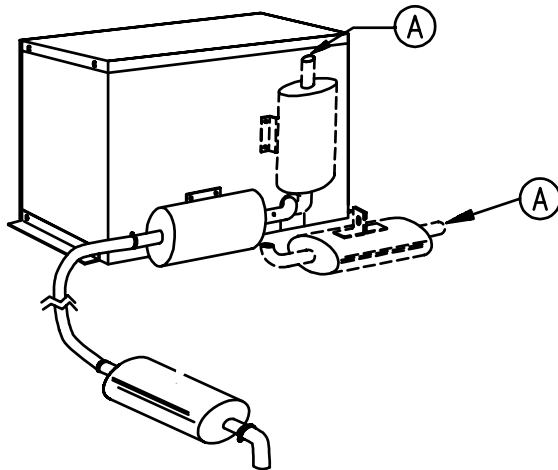
Examples of muffler installations



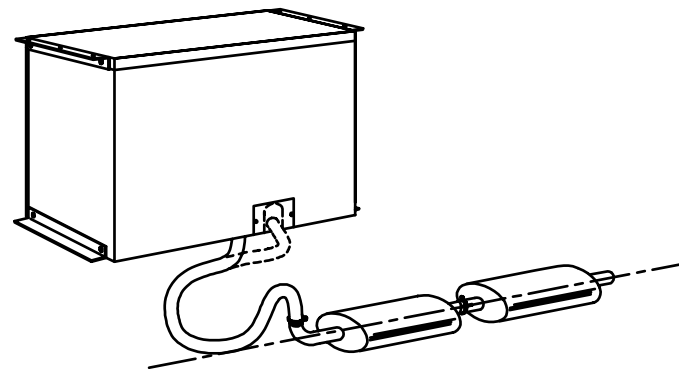
a) Rear exhaust side
Vertical muffler
Horizontal muffler



b) Bottom exhaust side

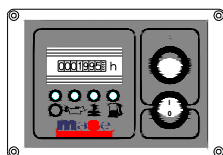


c) Bottom and rear exhaust side plus
silencer



d) Muffler and silencer joined by
flexible pipe

Location:



Remote control panel

The gen-set control panel was designed to include, in one single panel, the switches, control devices and the protection devices. The components are the following :

- Digital Hour-meter.
- Start-stop button.
- Warning lamps for high temperature, low oil pressure, generator running, low fuel level.
- Cable for remote connection, lenght 10 mt.

Engine

- Easy access for feeding system and lubrication's maintenance
- Safety shutdown in case of low oil pressure.
- Safety shutdown in case of high engine temperature.
- Easy access oil and fuel filters.

Alternator

- Synchronous, 2 poles, brushless self-excited, self-regulated.
- Rotor and stator epoxy resin coated against external agents.
- Rotor dynamically balanced.
- Insulation class H.

Soundproof cabin

A new project and a new great design. It is done with a frame structure made of steel painted with a special strong varnish against all external agents.

Excellent accessibility inside the genset makes also easier maintenance services even with genset installed in narrow site.

ENGINE

Model	Yanmar L70 N
Type	Diesel 4 stroke
Cylinders (nr.)	1
Displacement (cc)	296
Power (hp)	6,1
RPM	3000
Combustion system	Direct
Speed governor	Centrifugal, mechanical
Lubrication system	Forced
Oil sump capacity (lt)	1,1
Engine stop system	Solenoid
Fuel pump	Electric
Fuel pump discharge (cm)	70
Fuel consumption (l/h)	1,3
Starting battery (Ah-V)	45 - 12
Battery charger (Ah-V)	10 - 12
Starter (kW-V)	0,8 - 12

ALTERNATOR

Type	Synchronous type, 2-poles, auto excited
Cooling	Air
Voltage (V)	230
Frequency (Hz)	50
Insulating class	H
Voltage stability	±10%
Frequency stability	±5%

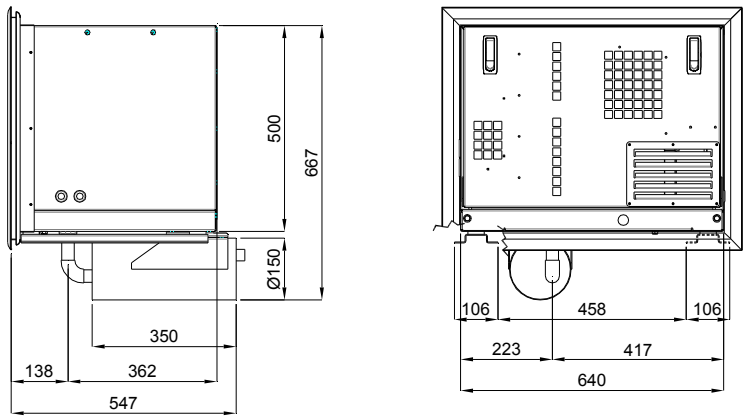
Max. power	3,2 kW
Rated power	3 kW
Power factor (cos ø)	1

Dimension (L x W x H)	640 x 500 x 500mm
Weight	120 Kg
Noise level	64 dBA at 7m

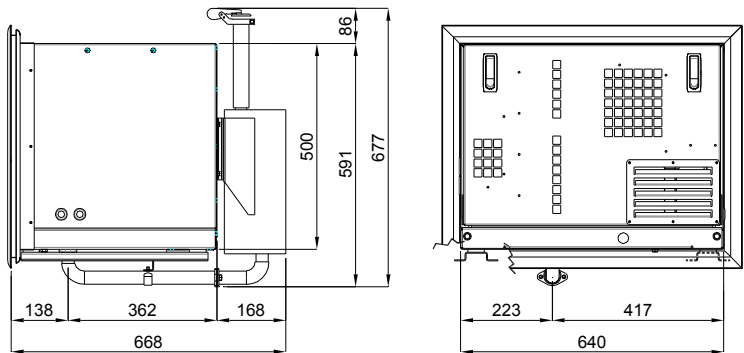
VOYAGER 4010 DM



Built-in installation

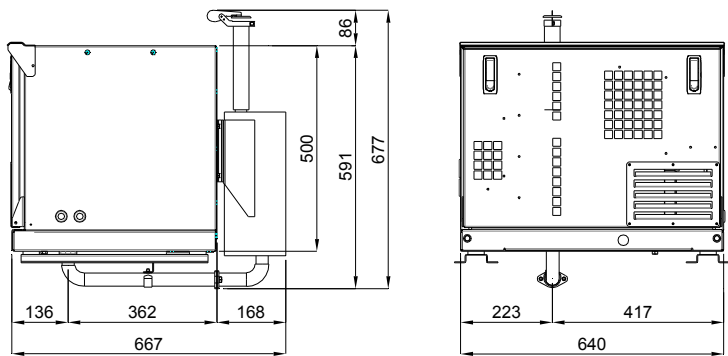


a) Bottom exhaust

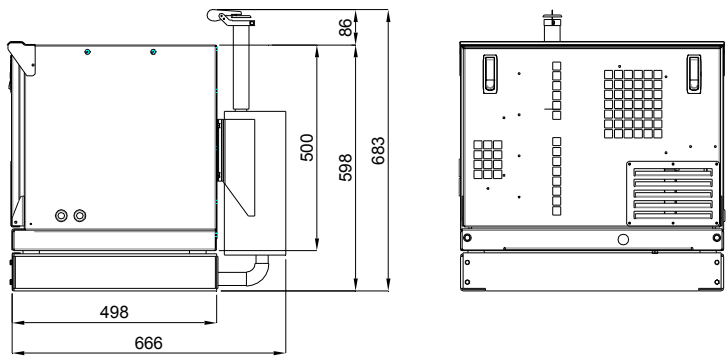


b) Rear exhaust

External installation

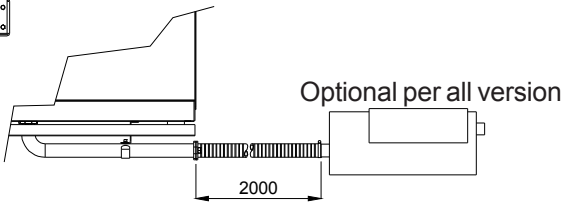


c) Rear exhaust with canopy's brackets

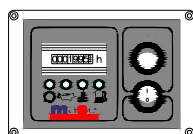


d) Rear exhaust with basement

Location:



mase generators S.p.A. reserves the right to change the design or specifications without notice and without any obligations or liability whatsoever. For more information, you may contact your local mase dealer.



Remote control panel

The gen-set control panel was designed to include, in one single panel, the switches, control devices and the protection devices. The components are the following :

- Hour-meter.
- Start-stop button.
- Warning lamps for high temperature, low oil pressure, generator running, low fuel level.
- Cable 10 mt long.

Engine

- Easy access for feeding system and lubrication's maintenance
- Safety shutdown in case of low oil pressure.
- Safety shutdown in case of high water/exhaust gas temperature.
- Oil and fuel filters of easy access.

Alternator

- Synchronous, 2 poles, brushless, self-excited, self-regulated.
- Rotor and stator epoxy resin coated against external agents.
- Rotor dynamically balanced.
- Insulation class H.

Soundproof cabin

A new project engineering design with a structure of painted steel panels with high resistance to external agents.
Easy access to the inner cabin in case of maintenance services.

MOTOR

Model	Yanmar L100
Type	Diesel 4 times
Cylinders (nr.)	1
Capacity (cc)	406
Power (hp)	8,8
RPM	3000
Injection system	Direct
Speed governor	Centrifugal, mechanical
Lubrication system	Forced
Oli sump capacity (lt)	1,65
Engine stop system	Solenoid
Fuel pump	Electric
Fuel pump discharge (cm)	70
Fuel consumption (lt/h)	2
Starting battery (Ah-V)	45 - 12
Battery charger (Ah-V)	10 - 12
Starter (kW-V)	0,8 - 12

ALTERNATOR

Type	Synchronous type, 2-poles, auto excited
Cooling	Air
Voltage (V)	230
Frequency (Hz)	50
Insulating class	H
Voltage stability	±10%
Frequency stability	±5%

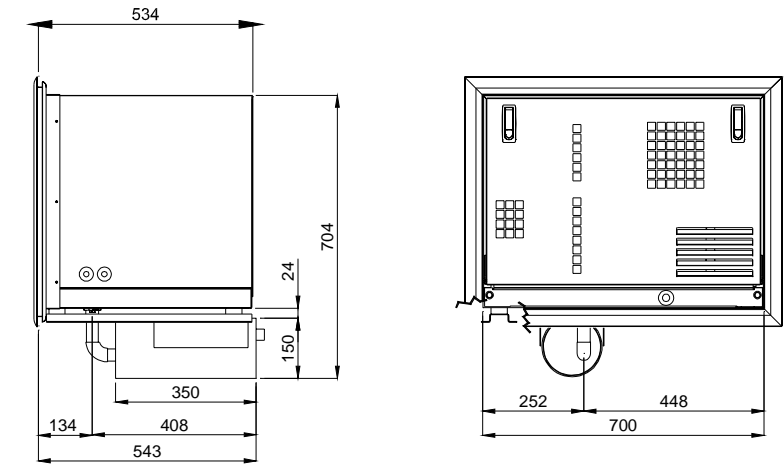
Max. power	5 kW
Continuous power	4,2 kW
Power factor(cos ø)	1

Dimensions(Len.x widthx height)	700 x 535 x 530mm
Weight	145 Kg.
Nois level	64 dB _A a 7mt

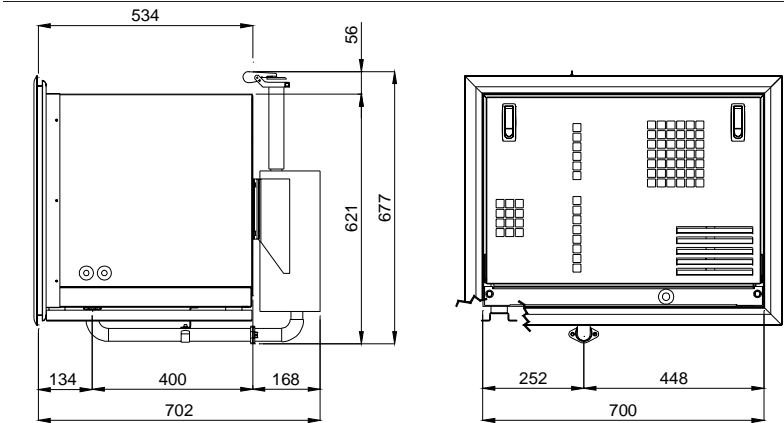
VOYAGER 5010 DM



Built-in installation

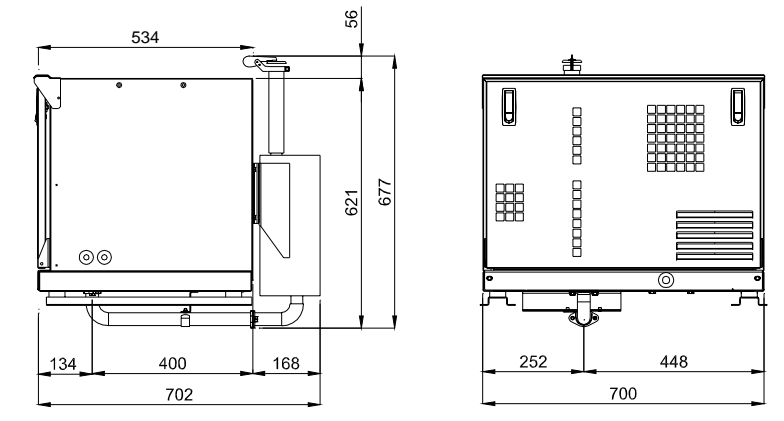


a) Bottom exhaust

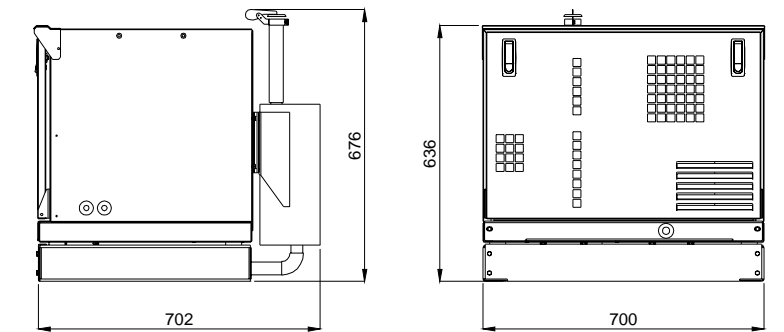


b) Rear exhaust

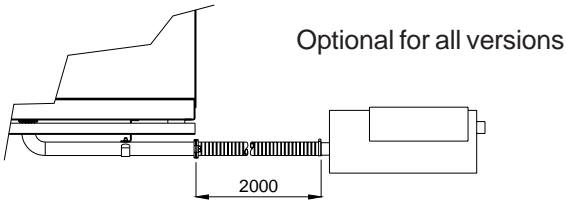
External installation



c) Rear exhaust with canopy's brackets



d) Rear exhaust with basement



Optional for all versions

Location:



Soundproof cabin

A new project engineering design with a structure of painted steel panels with high resistance to external agents.

Easy access to the inner cabin in case of maintenance services.

Remote control panel

The gen-set control panel was designed to include, in one single panel, the switches, control devices and the protection devices. The components are the following :

- Hour-meter.
- Start-stop button.
- Warning lamps for generator running, 12Vdc auxiliary circuit.
- Magnetothermal switch 20A on 230V output.
- Cable for remote connection.

Engine

- Easy access for feeding system and lubrication's maintenance.
- Safety shutdown in case of low oil pressure.
- Oil and fuel filters of easy access.

Alternator

- Synchronous, 2 poles, brushless self-excited, self-regulated.
- Rotor and stator epoxy resin coated against external agents.
- Rotor dynamically balanced.
- Insulation class F.

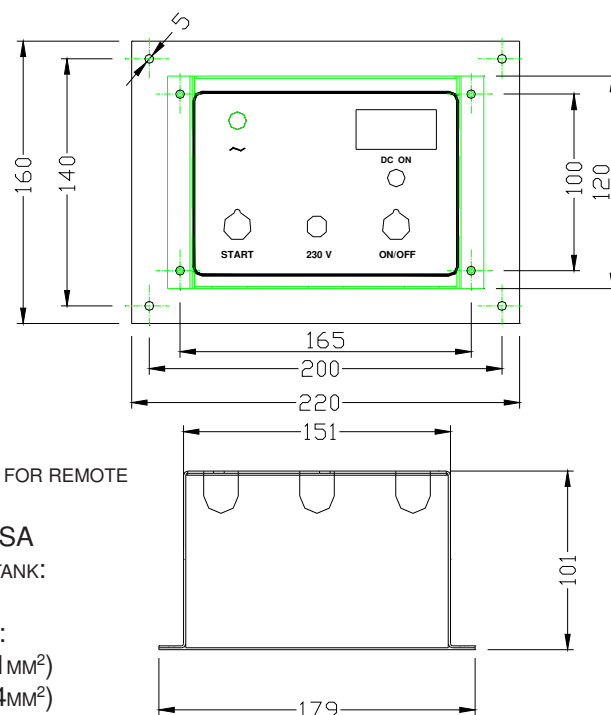
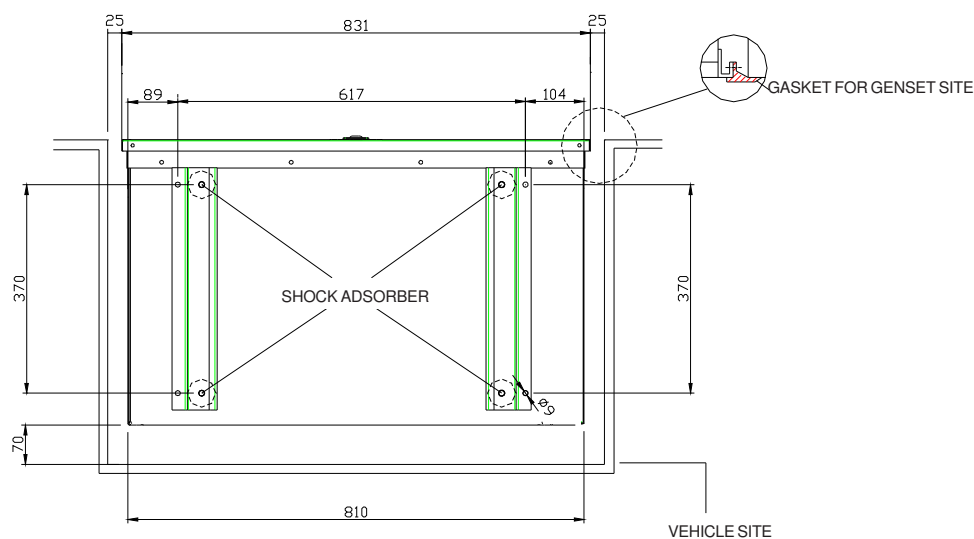
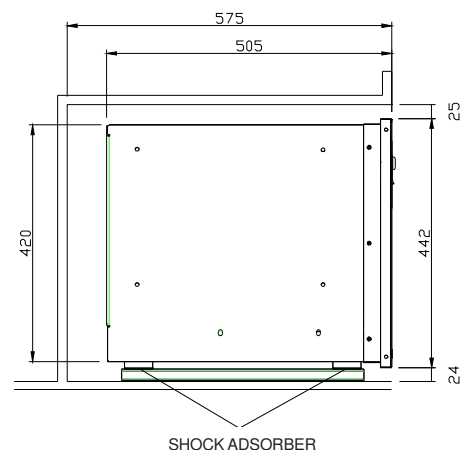
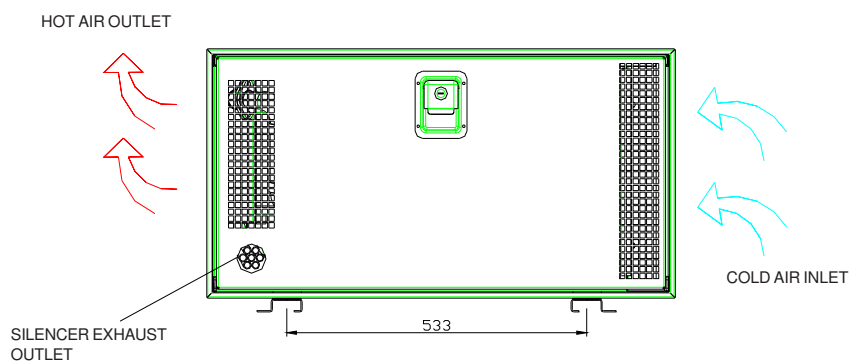
MODEL	Voyager 5800 B-GH
ALTERNATOR	Synchronous, Self-excited, Self-regulated, 2-poles
Type	Single-phase
Max. Power	5,8 kW
Rated Power	5,2 kW
Power Factor (cos ϕ)	1
Voltage	230 V
Frequency	50 Hz
Protection Level	IP 45

ENGINE	
Type	4-Stroke
Model	Honda GX390 OHV
Cooling	Air
Cylinders	1
Fuel	Gasoline
Power	8 kW / 11 hp
Displacement	389 cm ³
Air intake	Natural
RPM	3000
Oil sump capacity	1,1 L
Consumption (3/4 load)	1,6 L/h
Starter	Electric

Dimension (L x W x H) mm	810 x 505 x 420 mm
Weight	158 Kg.
Noise level	86 Lwa (61dB(A) at 7m)

VOYAGER 5800 B-GH

mase
GENERATORS



DIMENSION BOX FOR REMOTE
CONTROL PANEL
MHS 5800 H/SA
WITHOUT FUEL TANK:

CABLES LENGHT:
CABLE 9 MT (7x1MM²)
CABLE 9 MT (3x4MM²)

Dealer:

*mase generators S.p.A. reserves the right to change the design or specifications without notice and without any obligations or liability whatsoever. For more information, you may contact your local **mase** dealer.*



Remote control panel

The gen-set control panel was designed to include, in one single panel, the switches, control devices and the protection devices

The components are the following :

- Digital Hour-meter.
- Start-stop button.
- Warning lamps for high temperature, low oil pressure, generator running, low fuel level.
- Cable for remote connection, lenght 10 mt.

Onboard control panel

- Emergency stop button
- Magnetothermal switch for overload and short-circuit protection.

Engine

- Easy access for feeding system and lubrication's maintenance
- Safety shutdown in case of low oil pressure.
- Safety shutdown in case of high water temperature.
- Easy access oil and fuel filters.
- Liquid cooling.

Alternator

- Synchronous, 2 poles, brushless self-excited, self-regulated.
- Rotor and stator epoxy resin coated against external agents.
- Rotor dynamically balanced.
- Insulation class H.

Soundproof cabin

A new project and a new great design. It is done with a frame structure made of steel and a new aluminum cover painted with a special strong varnish against all external agents.

Excellent accessibility inside the genset makes also easier maintenance services even with genset installed in narrow site.

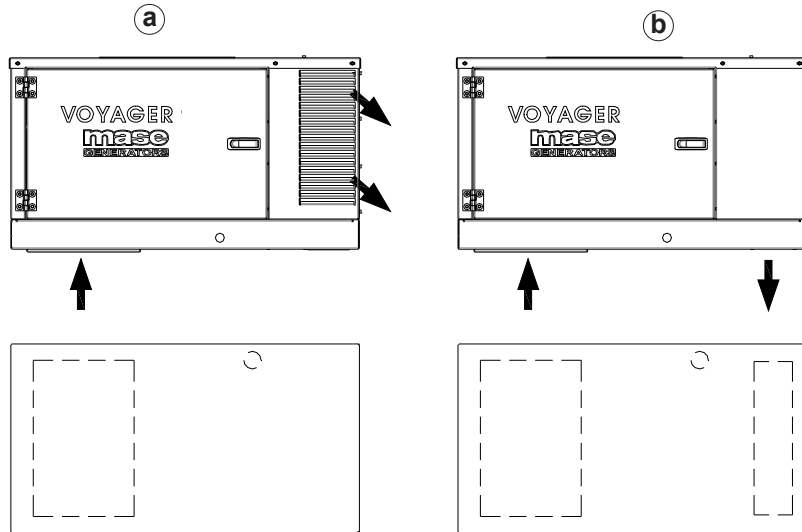
ENGINE

Model	KUBOTA Z482
Type	Diesel 4 stroke
Cylinders (nr.)	2
Displacement (cc.)	479
Power (hp)	11,1
RPM	3000
Combustion system	Indirect injection
Speed governor	Centrifugal, mechanical
Lubrication system	Forced
Oil sump capacity with filter (l)	2,5
Engine stop system	Stop solenoid
Fuel pump	Electric
Fuel pump discharge (cm)	70
Fuel consumption (l/h)	2,6
Starting battery (Ah-V)	45 - 12
Battery charger (Ah-V)	10-12
Starting motor (kW-V)	0,7 - 12

ALTERNATOR

Type	Synchronous, 2-poles self-excited
Cooling	Air
Voltage (V)	230
Frequency (Hz)	50
Insulating class	H
Voltage stability	±10%
Frequency stability	±5%
Max. power (kVA)	6 kW
Continuous power (kW)	5,5 kW
Power factor (cos ϕ)	1
Dimension (L x W x H) (mm)	941 x 550 x 600
Weight (kg)	190
Noise level (dBA a 7mt)	62

VOYAGER 6010 DM

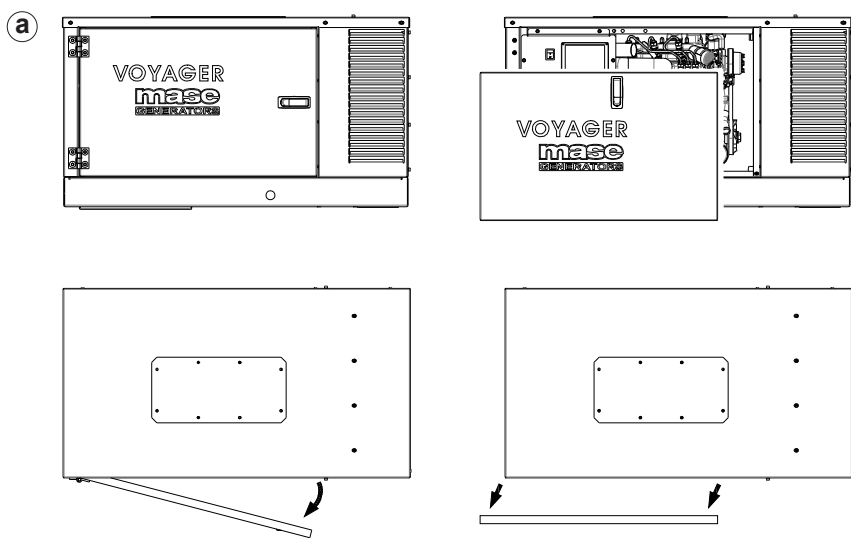


front view

N°2 options for hot air outlet

- a) Front hot air outlet (on the right)
- b) Bottom hot air outlet

bottom view

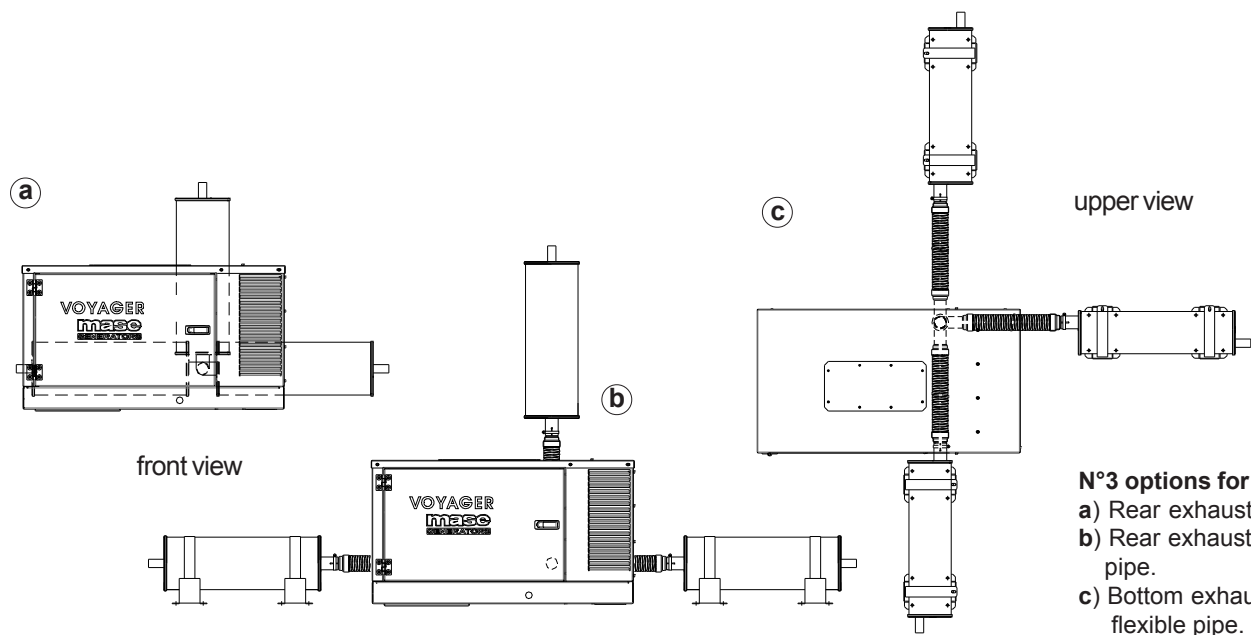


front view

N°2 options for the service door

- a) Right side door
- b) Totally removable panel

upper view



front view

upper view

N°3 options for exhaust gas

- a) Rear exhaust
- b) Rear exhaust with 2 mt flexible pipe.
- c) Bottom exhaust with 2 mt flexible pipe.

Dealer:

*This drawing is only a reference and is not indicatly for the installation.
For more information, you may contact your local dealer or **mase** generators S.p.A..*

mase generators S.p.A. reserves the right to change the design or specifications without notice and without any obligations or liability whatsoever
For more information, you may contact your local **mase** dealer.



Remote control panel

The gen-set control panel was designed to include, in one single panel, the switches, control devices and the protection devices. The components are the following :

- Digital Hour-meter.
- Start-stop button.
- Warning lamps for high temperature, low oil pressure, generator running, low fuel level.
- Cable for remote connection, length 10 mt.

Onboard control panel

- Emergency stop button
- Magnetothermal switch for overload and short-circuit protection.

Engine

- Easy access for feeding system and lubrication's maintenance
- Safety shutdown in case of low oil pressure.
- Safety shutdown in case of high water temperature.
- Easy access oil and fuel filters.
- Liquid cooling.

Alternator

- Synchronous, 2 poles, brushless self-excited, self-regulated.
- Rotor and stator epoxy resin coated against external agents.
- Rotor dynamically balanced.
- Insulation class H.

Soundproof cabin

A new project and a new great design. It is done with a frame structure made of steel and a new aluminum cover painted with a special strong varnish against all external agents. Excellent accessibility inside the genset makes also easier maintenance services even with genset installed in narrow site.

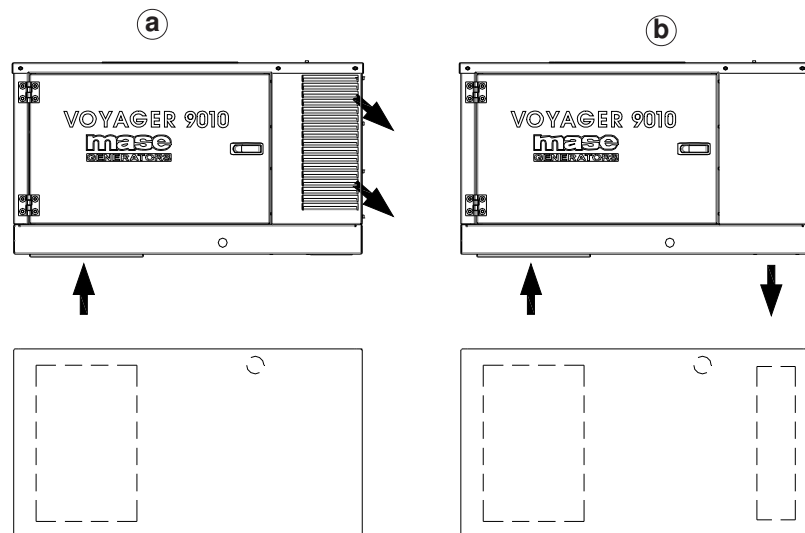
ENGINE

Model	KUBOTA D722
Type	Diesel 4 stroke
Cylinders (nr.)	3
Displacement (cc.)	719
Power (hp)	16,6
RPM	3000
Combustion system	Indirect injection
Speed governor	Centrifugal, mechanical
Lubrication system	Forced
Oil sump capacity with filter (l)	3,2
Engine stop system	Stop solenoid
Fuel pump	Electric
Fuel pump discharge (cm)	70
Fuel consumption (l/h)	2,7
Starting battery (Ah-V)	45 - 12
Battery charger (Ah-V)	10-12
Starting motor (kW-V)	0,7 - 12

ALTERNATOR

Type	Synchronous, 2-poles self-excited
Cooling	Air
Voltage (V)	230
Frequency (Hz)	50
Insulating class	H
Voltage stability	±10%
Frequency stability	±5%
Max. power (kVA)	8,2 kW
Continuous power (kW)	7,5 kW
Power factor (cos ϕ)	1
Dimension (L x W x H) (mm)	1010 x 550 x 560
Weight (kg)	220
Noise level (dBA a 7mt)	62

VOYAGER 9010 DM

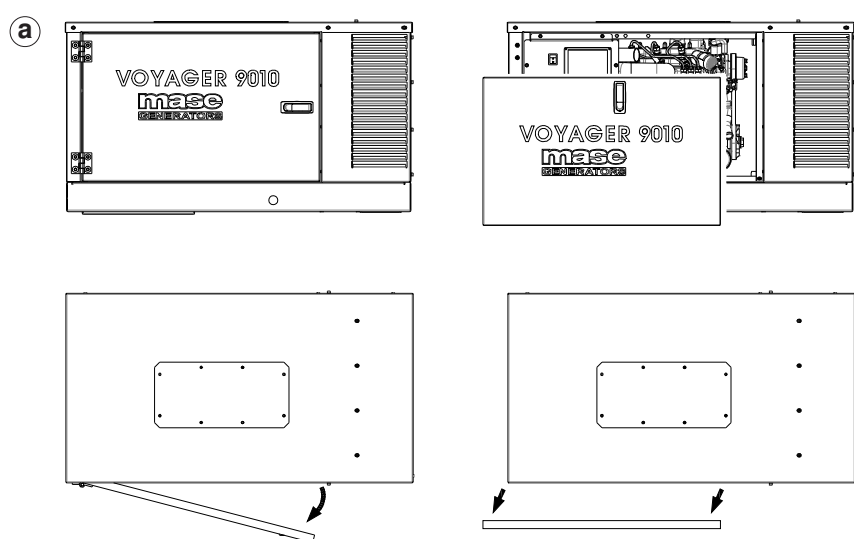


front view

N°2 options for hot air outlet

- a) Front hot air outlet (on the right)
- b) Bottom hot air outlet

bottom view

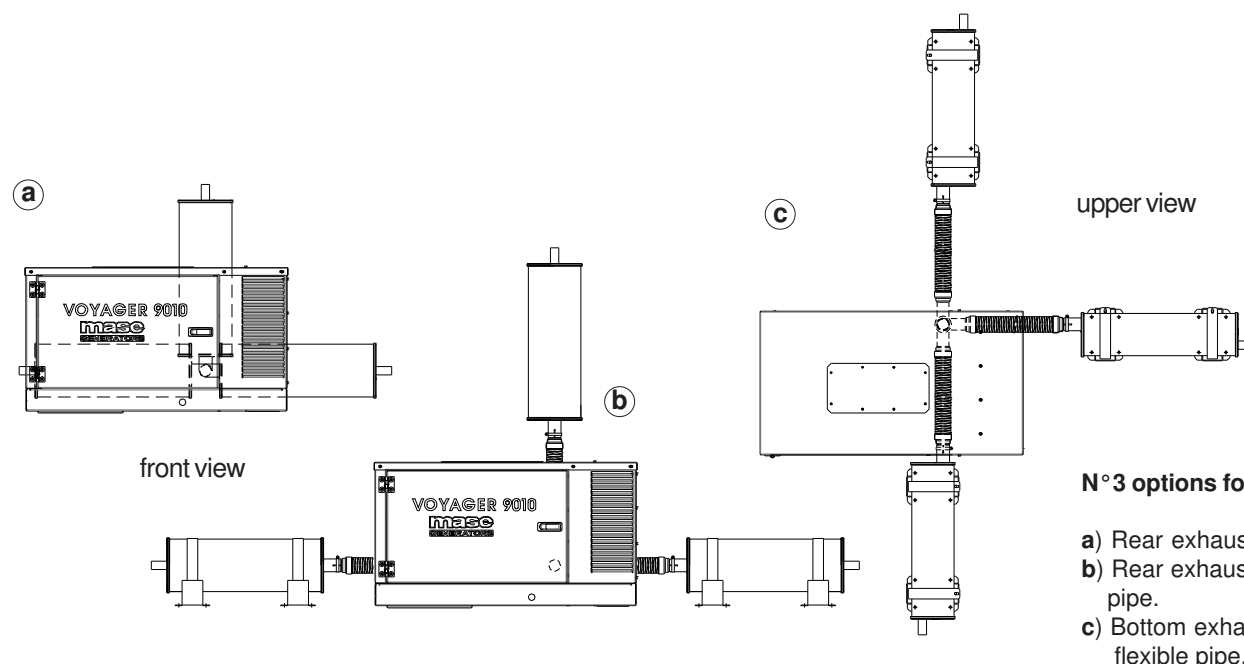


front view

N°2 options for the service door

- a) Right side door
- b) Totally removable panel

upper view



front view

upper view

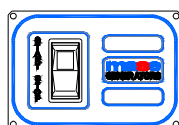
N°3 options for exhaust gas

- a) Rear exhaust
- b) Rear exhaust with 2 mt flexible pipe.
- c) Bottom exhaust with 2 mt flexible pipe.

Dealer:

*This drawing is only a reference and is not indicatly for the installation.
For more information, you may contact your local dealer or **mase** generators S.p.A..*

mase generators S.p.A. reserves the right to change the design or specifications without notice and without any obligations or liability whatsoever
For more information, you may contact your local **mase** dealer.



Control Panel on board

The gen-set control panel was designed to include, in one single panel, the switches, control devices and the protection devices. The components are the following :

- Electronic device for automatic shutdown of engine in case of high water temperature, low oil pressure, high alternator temperature.
- Hour-meter.
- Start-stop button.
- Circuit breaker for protection against overload or short circuit.
- Thermal switch.

Remote control panel

Remote control panel with 20mt. of cable with:
Start-stop button, engine running lamp.

Engine

- Easy access for feeding system and lubrication's maintenance
- Safety shutdown in case of low oil pressure.
- Safety shutdown in case of high water temperature.
- Oil and fuel filters of easy access.

Alternator

- Synchronous, 4 poles, brushless self-excited, electronic voltage regulator (AVR).
- Rotor and stator epoxy resin coated against external agents.
- Rotor dynamically balanced.
- Insulation class H.

Soundproof cabin

A new project engineering design with a structure of painted steel panels with high resistance to external agents.

Easy access to the inner cabin in case of maintenance services.

ENGINE

	9.5 DM	11.5 DT
Model	Yanmar 3TNV82A	
Type	Diesel 4 stroke	
Cylinders (nr.)	3	
Displacement (cc.)	1330	
Power (hp)	15,4	
RPM	1500	
Combustion system	Direct injection	
Speed governor	Centrifugal, mechanical	
Lubrication system	Forced	
Oil sump capacity with filter (l)	5,2	
Engine stop system	Stop solenoid	
Fuel pump	Electric	
Fuel pump discharge (cm)	70	
Fuel consumption (l/h)	3,2	
Starting battery (Ah-V)	70 - 12	
Battery charger (Ah-V)	40 - 12	
Starting motor (kW-V)	1,2 - 12	

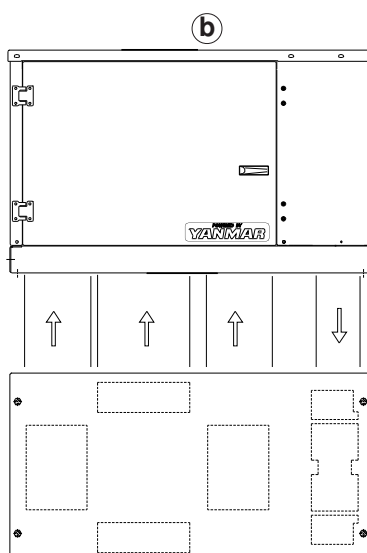
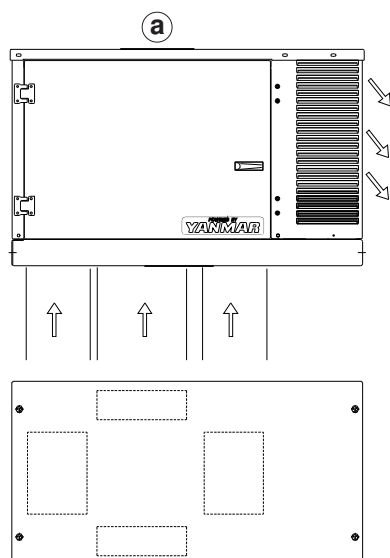
ALTERNATOR

Type	Synchronous, 4-poles, brush less self-excited	
Regulator	Electronic	
Cooling	Air	
Voltage (V)	230	400-230
Frequency (Hz)	50	
Insulating class	H	
Voltage stability	±2%	
Frequency stability	±5%	

Max. power (kVA)	9 kW	11,2 kVA
Continuous power (kW)	8,2 kW	10,2 kVA
Power factor (cos ø)	1	0,8

Dimension (L x W x H) (mm)	1070 x 560 x 660	
Weight (kg)	320	
Noise level (dBA a 7mt)	58	

VOYAGER 9.5DM - 11.5DT

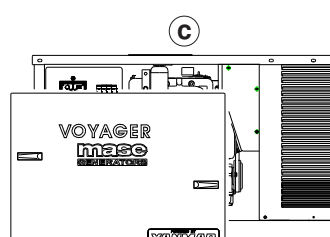
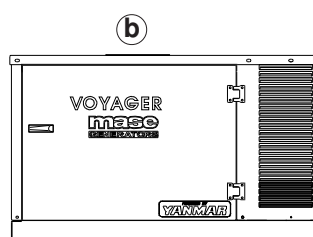
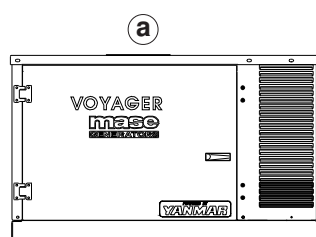


front view

N°2 options for hot air outlet

- a) Front hot air outlet
- b) Bottom hot air outlet

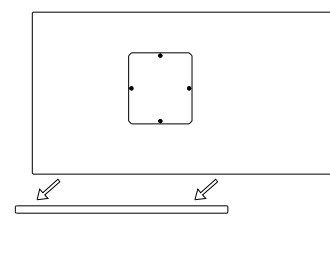
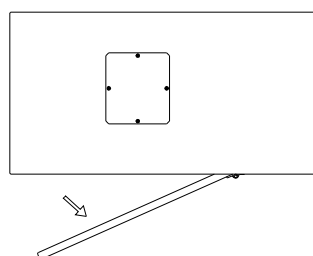
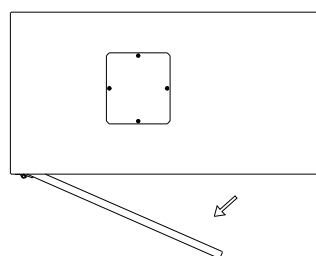
bottom view



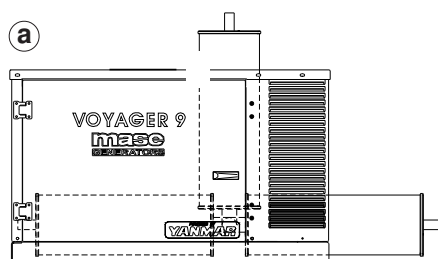
front view

N°3 options for the door

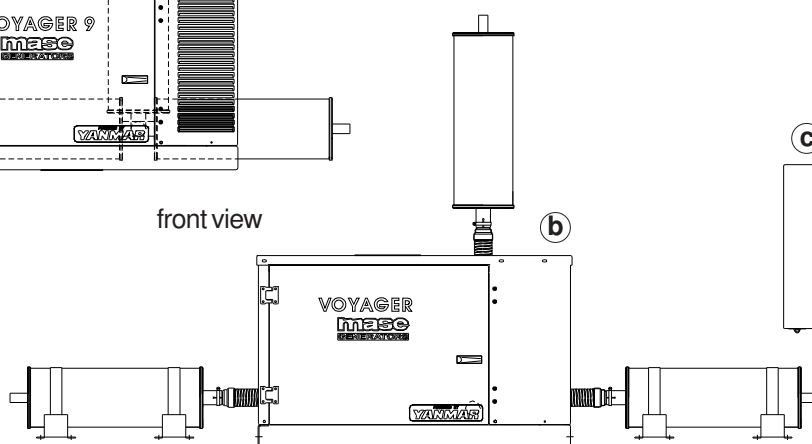
- a) Right side door
- b) Left side door
- c) Totally removal door



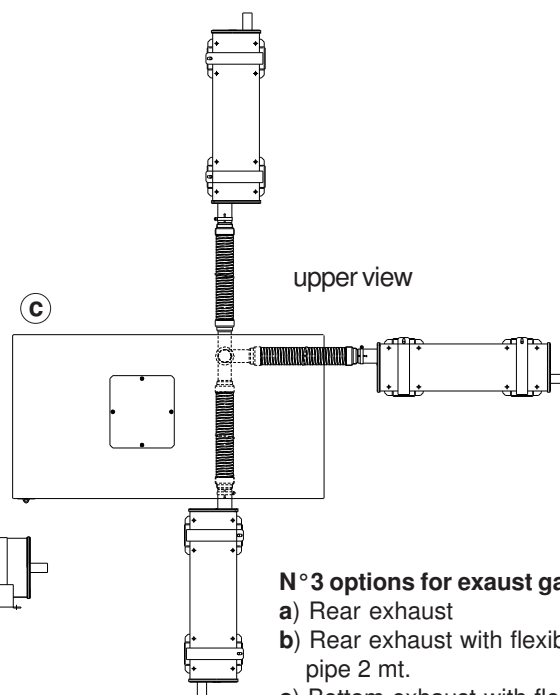
upper view



front view



b

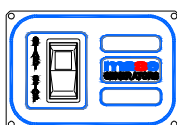


upper view

N°3 options for exhaust gas

- a) Rear exhaust
- b) Rear exhaust with flexible pipe 2 mt.
- c) Bottom exhaust with flexible pipe 2 mt.

Location:



Control Panel on board

The gen-set control panel was designed to include, in one single panel, the switches, control devices and the protection devices. The components are the following :

- Electronic device for automatic shutdown of engine in case of high water temperature, low oil pressure, high alternator temperature.
- Hour-meter.
- Start-stop button.
- Circuit breaker for protection against overload or short circuit.
- Thermal switch.

Remote control panel

Remote control panel with 20mt. of cable with:
Start-stop button, engine running lamp.

Engine

- Easy access for feeding system and lubrication's maintenance
- Safety shutdown in case of low oil pressure.
- Safety shutdown in case of high water temperature.
- Oil and fuel filters of easy access.

Alternator

- Synchronous, 4 poles, brushless self-excited, electronic voltage regulator (AVR).
- Rotor and stator epoxy resin coated against external agents.
- Rotor dynamically balanced.
- Insulation class H.

Soundproof cabin

A new project engineering design with a structure of painted steel panels with high resistance to external agents.

Easy access to the inner cabin in case of maintenance services.

ENGINE

	9.5 DM	11.5 DT
Model	Yanmar 3TNV82A	
Type	Diesel 4 stroke	
Cylinders (nr.)	3	
Displacement (cc.)	1330	
Power (hp)	15,4	
RPM	1500	
Combustion system	Direct injection	
Speed governor	Centrifugal, mechanical	
Lubrication system	Forced	
Oil sump capacity with filter (l)	5,2	
Engine stop system	Stop solenoid	
Fuel pump	Electric	
Fuel pump discharge (cm)	70	
Fuel consumption (l/h)	3,2	
Starting battery (Ah-V)	70 - 12	
Battery charger (Ah-V)	40 - 12	
Starting motor (kW-V)	1,2 - 12	

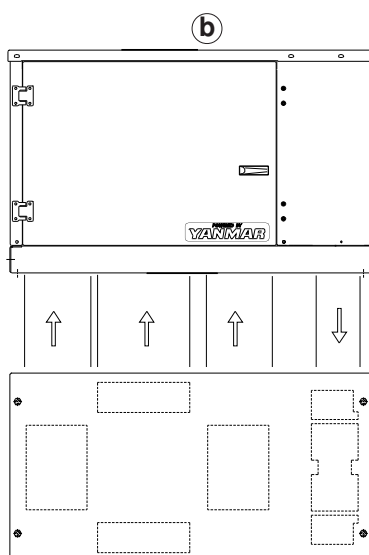
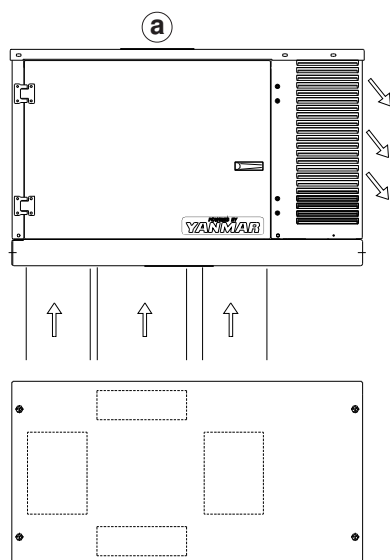
ALTERNATOR

Type	Synchronous, 4-poles, brush less self-excited	
Regulator	Electronic	
Cooling	Air	
Voltage (V)	230	400-230
Frequency (Hz)	50	
Insulating class	H	
Voltage stability	±2%	
Frequency stability	±5%	

Max. power (kVA)	9 kW	11,2 kVA
Continuous power (kW)	8,2 kW	10,2 kVA
Power factor (cos ø)	1	0,8

Dimension (L x W x H) (mm)	1070 x 560 x 660	
Weight (kg)	320	
Noise level (dBA a 7mt)	58	

VOYAGER 9.5DM - 11.5DT

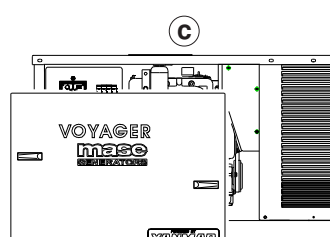
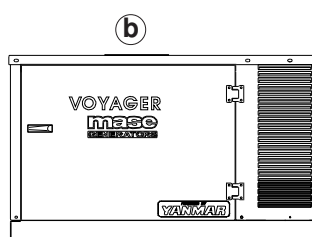
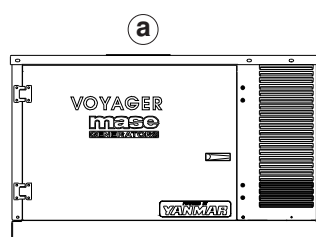


front view

N°2 options for hot air outlet

- a) Front hot air outlet
- b) Bottom hot air outlet

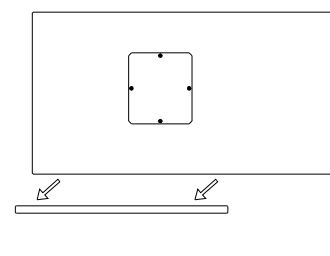
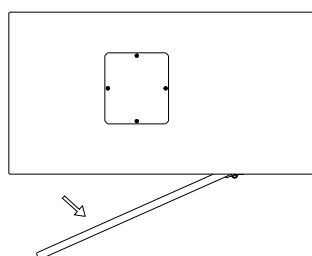
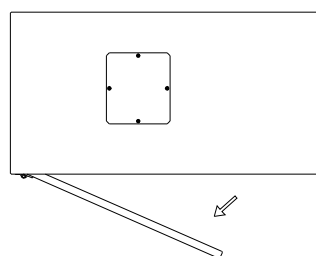
bottom view



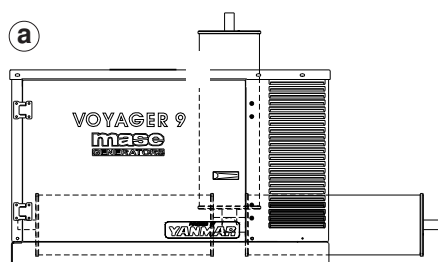
front view

N°3 options for the door

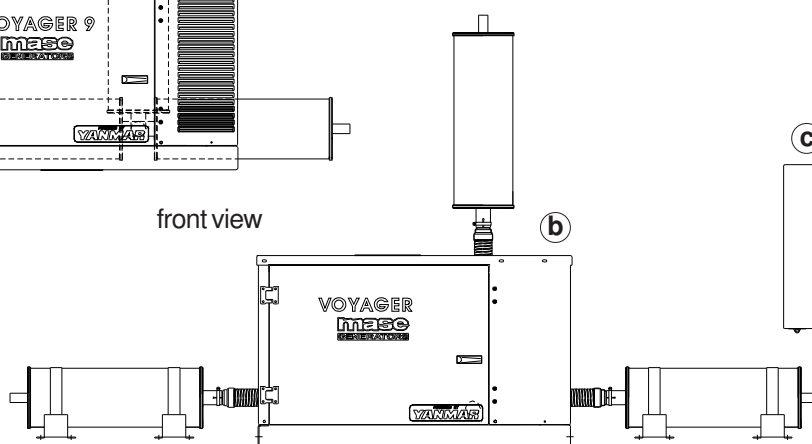
- a) Right side door
- b) Left side door
- c) Totally removal door



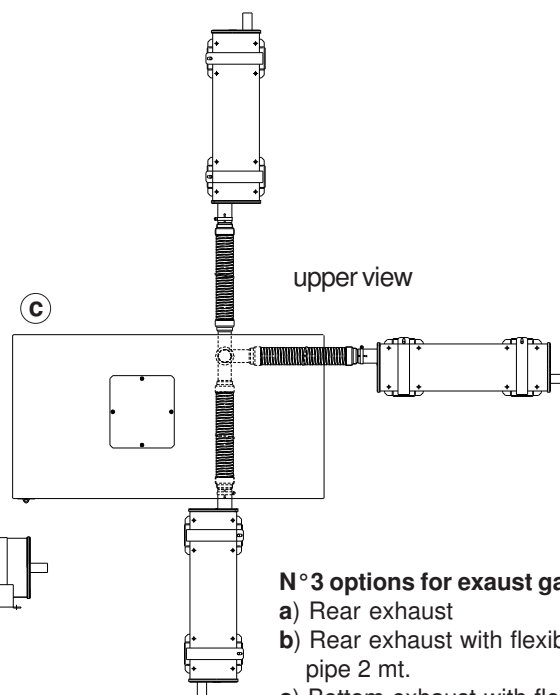
upper view



front view



b

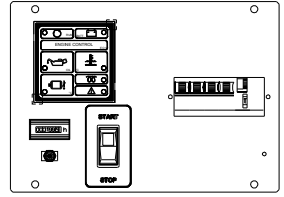
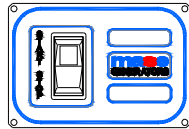


upper view

N°3 options for exhaust gas

- a) Rear exhaust
- b) Rear exhaust with flexible pipe 2 mt.
- c) Bottom exhaust with flexible pipe 2 mt.

Location:



Control Panel on board

The gen-set control panel was designed to include, in one single panel, the switches, control devices and the protection devices. The components are the following :

- Electronic device for automatic shutdown of engine in case of high water temperature, low oil pressure, high alternator temperature.
- Hour-meter.
- Start-stop button.
- Circuit breaker for protection against overload or short circuit.
- Thermal switch.

Remote control panel

Remote control panel with 20mt. of cable with:
Start-stop button, engine running lamp.

Engine

- Easy access for feeding system and lubrication's maintenance
- Safety shutdown in case of low oil pressure.
- Safety shutdown in case of high water temperature.
- Oil and fuel filters of easy access.

Alternator

- Synchronous, 4 poles, brushless self-excited, electronic voltage regulator (AVR).
- Rotor and stator epoxy resin coated against external agents.
- Rotor dynamically balanced.
- Insulation class H.

Soundproof cabin

A new project engineering design with a structure of painted steel panels with high resistance to external agents.
Easy access to the inner cabin in case of maintenance services.

MODEL	12 DM	15 DT
ALTERNATOR	Synchronous, Self-excited, Self-regulated, 4-poles	
Type	Single-phase	Three-phase
Max. Power	11,2 kW	14,0 kW
Rated Power	10,2 kW	12,7 kW
Power Factor (cos ϕ)	1	0,8
Voltage	230 V	400 V
Frequency	50 Hz	
Protection Level	IP 23	

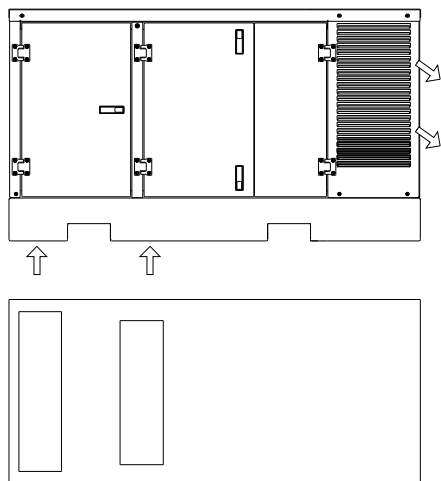
ENGINE	
Type	4-Stroke
Model	Yanmar 3TNV88
Cooling	Water
Cylinders	3
Fuel	Diesel
Power	13,5 kW / 18,4 hp
Displacement	1642 cm ³
Air intake	Natural
RPM	1500
Oil sump capacity	6,7 lt.
Consumption (full load)	4 L/h
Starter	Electric

Dimension (L x W x H) mm	1440 x 650 x 810
Weight	485 Kg.
Noise level	62 dB _A a 7mt

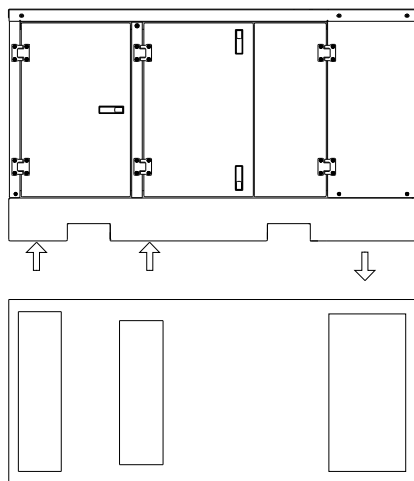
VOYAGER 12DM - 15DT

N°3 options for hot air outlet

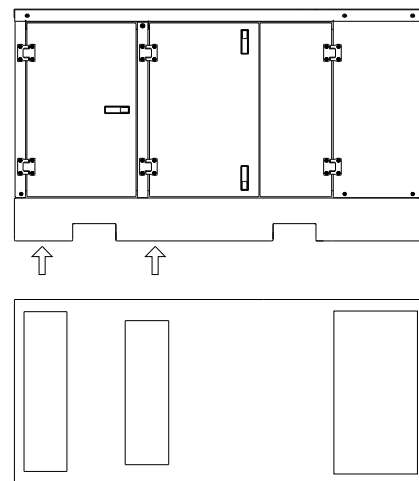
a) Front hot air outlet



b) Bottom hot air outlet

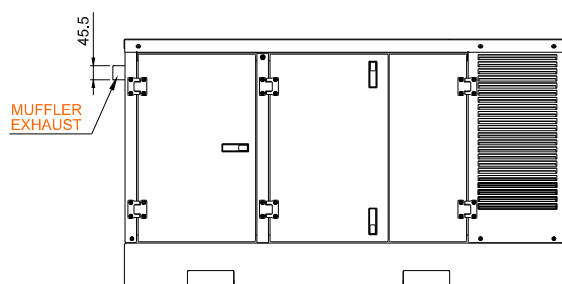


c) Upper hot air outlet ↑



Exhaust gas from lateral side (standard)

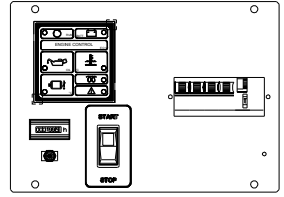
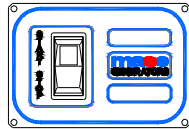
Different exhaust solution on request



*This drawing is only a reference and is not indicated for the installation. For more information, you may contact your local dealer or **mase** generators S.p.A..*

mase generators S.p.A. reserves the right to change the design or specifications without notice and without any obligations or liability whatsoever. For more information, you may contact your local **mase** dealer.

Dealer:



Control Panel on board

The gen-set control panel was designed to include, in one single panel, the switches, control devices and the protection devices. The components are the following :

- Electronic device for automatic shutdown of engine in case of high water temperature, low oil pressure, high alternator temperature.
- Hour-meter.
- Start-stop button.
- Circuit breaker for protection against overload or short circuit.
- Thermal switch.

Remote control panel

Remote control panel with 20mt. of cable with:
Start-stop button, engine running lamp.

Engine

- Easy access for feeding system and lubrication's maintenance
- Safety shutdown in case of low oil pressure.
- Safety shutdown in case of high water temperature.
- Oil and fuel filters of easy access.

Alternator

- Synchronous, 4 poles, brushless self-excited, electronic voltage regulator (AVR).
- Rotor and stator epoxy resin coated against external agents.
- Rotor dynamically balanced.
- Insulation class H.

Soundproof cabin

A new project engineering design with a structure of painted steel panels with high resistance to external agents.
Easy access to the inner cabin in case of maintenance services.

MODEL	12 DM	15 DT
ALTERNATOR	Synchronous, Self-excited, Self-regulated, 4-poles	
Type	Single-phase	Three-phase
Max. Power	11,2 kW	14,0 kW
Rated Power	10,2 kW	12,7 kW
Power Factor (cos ϕ)	1	0,8
Voltage	230 V	400 V
Frequency	50 Hz	
Protection Level	IP 23	

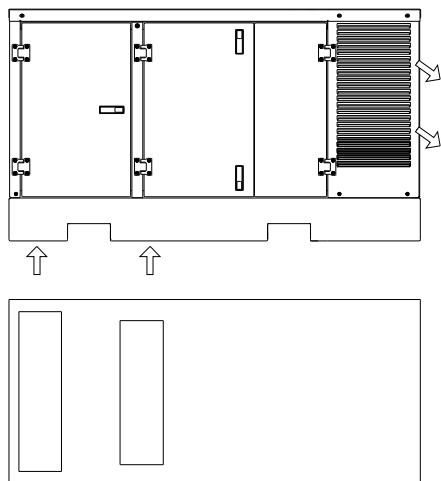
ENGINE	
Type	4-Stroke
Model	Yanmar 3TNV88
Cooling	Water
Cylinders	3
Fuel	Diesel
Power	13,5 kW / 18,4 hp
Displacement	1642 cm ³
Air intake	Natural
RPM	1500
Oil sump capacity	6,7 lt.
Consumption (full load)	4 L/h
Starter	Electric

Dimension (L x W x H) mm	1440 x 650 x 810
Weight	485 Kg.
Noise level	62 dB _A a 7mt

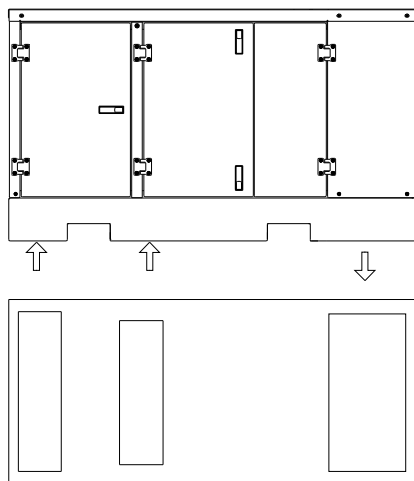
VOYAGER 12DM - 15DT

N°3 options for hot air outlet

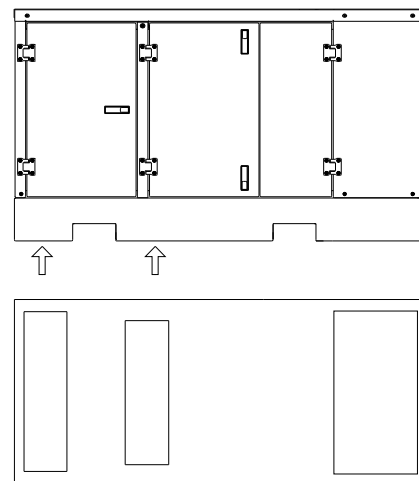
a) Front hot air outlet



b) Bottom hot air outlet

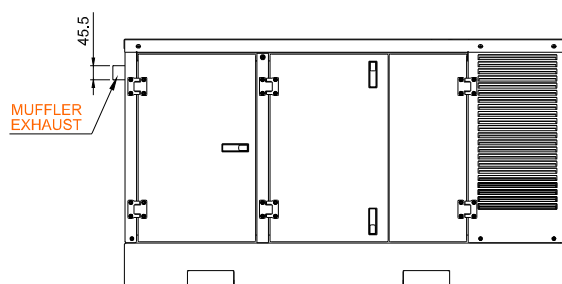


c) Upper hot air outlet ↑



Exhaust gas from lateral side (standard)

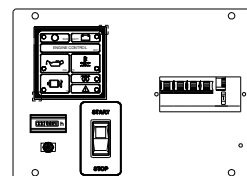
Different exhaust solution on request



*This drawing is only a reference and is not indicated for the installation. For more information, you may contact your local dealer or **mase** generators S.p.A..*

mase generators S.p.A. reserves the right to change the design or specifications without notice and without any obligations or liability whatsoever. For more information, you may contact your local **mase** dealer.

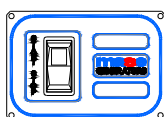
Dealer:



Control Panel on board

The gen-set control panel was designed to include, in one single panel, the switches, control devices and the protection devices. The components are the following :

- Electronic device for automatic shutdown of engine in case of high water temperature, low oil pressure, high alternator temperature.
- Hour-meter.
- Start-stop button.
- Circuit breaker for protection against overload or short circuit.
- Thermal switch.



Remote control panel

Remote control panel with 20mt. of cable with:
Start-stop button, engine running lamp.

Engine

- Easy access for feeding system and lubrication's maintenance
- Safety shutdown in case of low oil pressure.
- Safety shutdown in case of high water temperature.
- Oil and fuel filters of easy access.

Alternator

- Synchronous, 4 poles, brushless self-excited, electronic voltage regulator (AVR).
- Rotor and stator epoxy resin coated against external agents.
- Rotor dynamically balanced.
- Insulation class H.

Soundproof cabin

A new project engineering design with a structure of painted steel panels with high resistance to external agents.
Easy access to the inner cabin in case of maintenance services.

MODEL	16 DM	20 DT
ALTERNATOR	Synchronous, Self-excited, Self-regulated, 4-poles	
Type	Single-phase	Three-phase
Max. Power	15,3 kW	19,1 kVA
Rated Power	13,9 kW	17,4 kVA
Power Factor (cos ϕ)	1	0,8
Voltage	230 V	400 V
Frequency	50 Hz	
Protection Level	IP 23	

ENGINE	
Type	4-Stroke
Model	Yanmar 4TNV88
Cooling	Water
Cylinders	4
Fuel	Diesel
Power	18 kW / 24,1 hp
Displacement	2190 cm ³
Air intake	Natural
RPM	1500
Oil sump capacity	7,4 lt.
Consumption (full load)	5 L/h
Starter	Electric
Dimension (L x W x H) mm	1570 x 650 x 810
Weight	550 Kg.
Noise level	62 dB _A a 7mt